



# Braemar Crescent

East Hunsbury, Northampton

oriordanbond  
LETTINGS



# Braemar Crescent

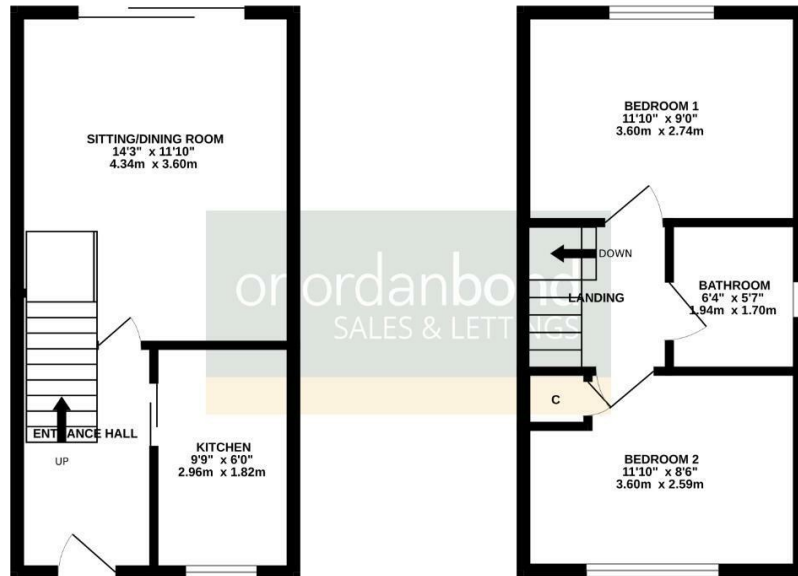
East Hunsbury  
NN4 0FG

£1,100 PCM

A well presented two double bedroom end terraced home, nestled in a cul-de-sac, within the popular area of East Hunsbury. The accommodation comprises entrance hall with stairs to the first floor, superb modern fitted kitchen with some appliances, and a sitting/dining room with patio doors leading to the rear garden. To the first floor there are two double bedrooms and a modern

GROUND FLOOR

1ST FLOOR



## Tenancy Information

- Deposit: £1269.00
- Smokers: Not Allowed
- Unfurnished
- Available: Now
- 1 Week Holding Deposit (£253.00)

## Additional information

- Council Tax Band: B
- Energy Efficiency Rating: C

## Viewing

Viewing strictly by appointment – details below

## Disclaimer

O’Riordan Bond Estate Agents Limited has not tested apparatus, equipment, fittings or services and so cannot verify they are in working order. The buyer is advised to obtain verification from their solicitor or surveyor.

O’Riordan Bond Weston Favell Lettings  
01604 814400

lettingswestonfavell@oriordanbond.co.uk

TOTAL FLOOR AREA: 600sq. ft. (55.7 sq.m.) approx.  
While every attempt has been made to ensure the accuracy of the floorplan contained herein, measurements of doors, windows, rooms and any other items are approximate and no responsibility is taken for any error, omission or mis-statement. This plan is for illustrative purposes only and should be used as such by any prospective purchaser. The services, systems and appliances shown have not been tested and no guarantee as to their operability or efficiency can be given.  
Made with Metropac G2025

